

J A S



251 Francis St Yarraville VIC

3 1 1

This lovingly cared for home has been updated with fresh touches and modern conveniences to combine the old and new elements in a perfect balance.

Ideally located opposite Cruickshank Park you will enjoy being within easy striking distance to Yarraville Village, Wembley St Shops, Yarraville Train Station, Westgate freeway access and some of the best local schools.

Ready to go the house features;

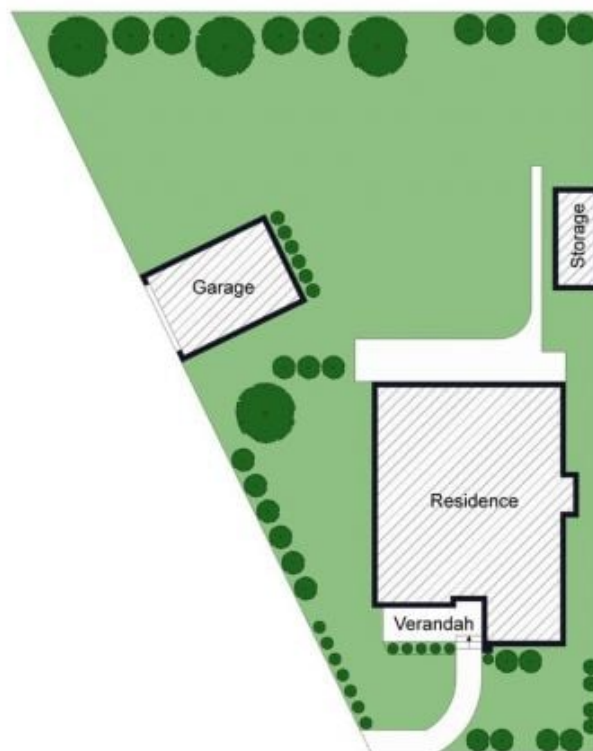
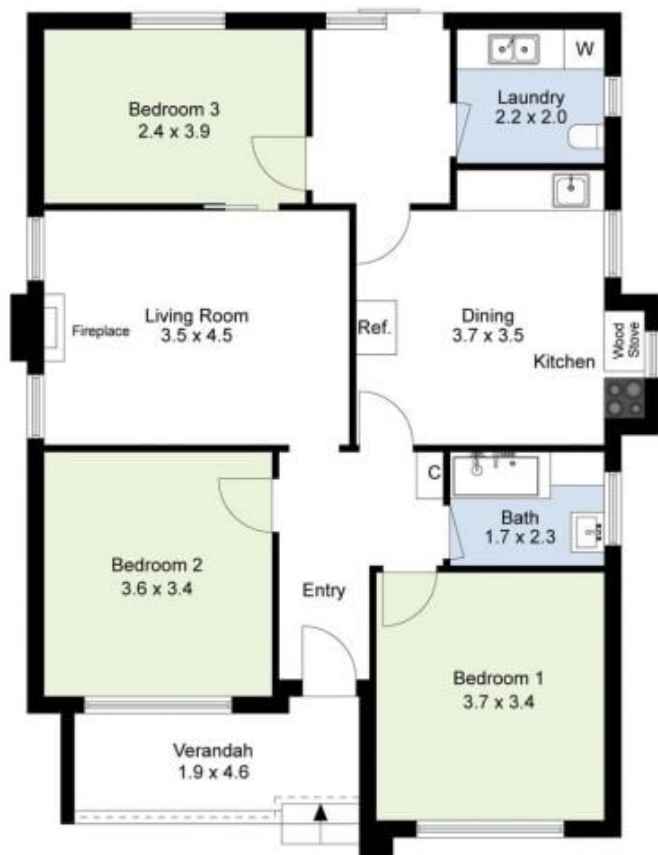
- Fresh paint, new blinds and new carpet
- Three great sized bedrooms
- Well lit living room with hardwood floors
- Updated kitchen features new cabinetry, dishwasher and space for a table
- Central bathroom is retro cool with shower over bath
- Full size laundry and separate toilet
- Secure lock up garage

Price : \$650 per week

View : <https://www.jasstephens.com.au/8162986>



Stephanie Njomkam
0478135951



Site Plan



Total Internal Measurement 90 Sqm.

Measurements are indicative and in meters. Exterior elements are not in exact position.
Interested parties should confirm details at their own discretion