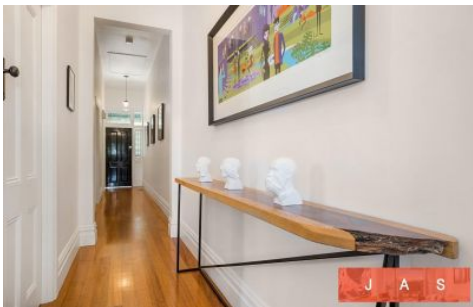


J A S



13 The Crescent Footscray VIC

2 🏠 1 🚗

Welcome to 13 The Crescent, a stunning executive residence nestled at the gateway to Docklands and Melbourne's CBD. Ideally located just moments from Flemington Racecourse, Maribyrnong River trails, and the vibrant heart of Footscray, this tastefully renovated luxury home offers a blend of elegance and modern convenience.

Price : \$700 per week

View : <https://www.jasstephens.com.au/8118493>

Behind the elegant façade the property features;

- Light-filled interior features bespoke glass doors high ceilings complemented by polished concrete and Tasmanian Oak floors
- A contemporary open-plan living space that seamlessly connects kitchen and rear yard
- The gourmet kitchen boast SMEG double wall oven, microwave, De'Longhi gas stove, intergrated coffee machine, stone benches and island breakfast

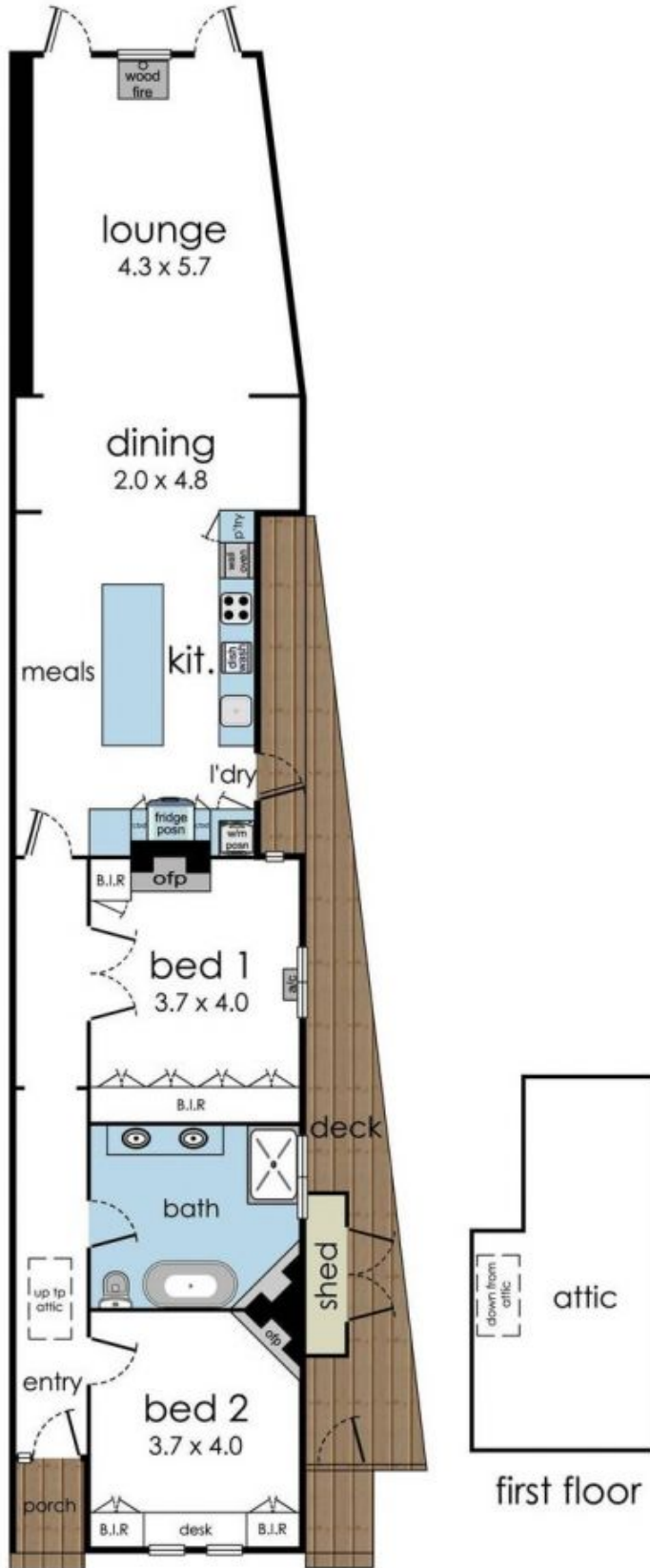


Illy Bakesy
0435871638



This plan is a sketch, and all data shown is general only.

NB: All stated dimensions are approximate only and should not be taken as definite.



first floor