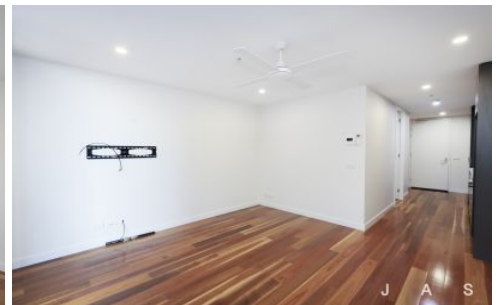
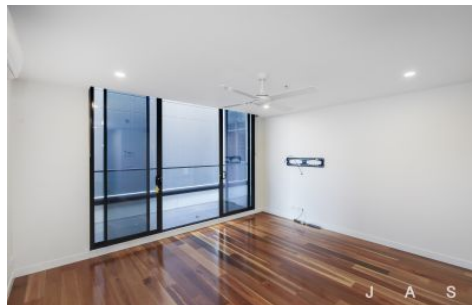


J A S



223/9 Hewitt Avenue Footscray VIC

1  1  1 

Set in the ever popular and exceptionally well maintained "Botanica" Building, this immaculate one bedroom apartment is sure to impress.

Located within short walking distance to West Footscray Station the apartment enjoys the convenience of having Beaurepaire Reserve next door. Great cafes all around and downtown Footscray close by.

The apartment features

- One great sized carpeted bedroom with built in robes, ceiling fan and study nook
- Galley style kitchen opens onto the living and features beautiful hardwood floors
- Kitchen with gas stove and a dishwasher
- Living with split system heating and cooling, ceiling fan and opens to the private balcony
- Neat bathroom with large shower

View : <https://www.jasstephens.com.au/8114613>



Natasha Roman
0478135940