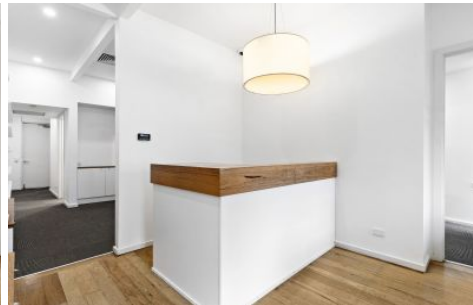


JAS



7/83 Douglas Parade Williamstown VIC

2 

This clean & modern blank canvas awaits your reality. Superb medical, psychology, allied professional, beautician, or office space opportunity with prominent exposure to road and foot traffic. The property is situated on busy Douglas Parade, Williamstown and just 10 mins walk to North Williamstown Train Station. This commercial property is right amongst the many vibrant cafes, restaurants, and shops that Williamstown has to offer.

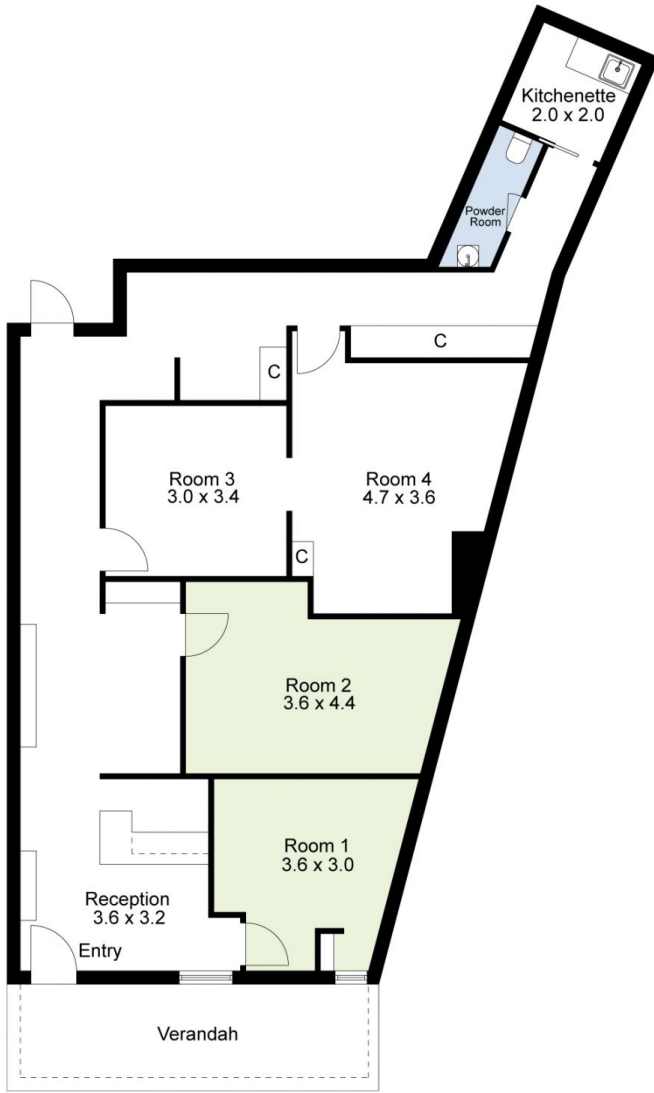
Price : Contact Agent
Building Size : 115 sqm
Land Size : 125 sqm
View : <https://www.jasstephens.com.au/807348>
2

This formally 'Day Health Spa' property includes:

- Vacant period style commercial freehold of 116 sqm approx.
- Excellent high exposure road signage potential
- Designated reception area with 4 individual specialty treatment rooms
- Plenty of doorstep on street parking



Chris Worthy
0456809247



Total Internal Measurement 115 Sqm.

Measurements are indicative and in meters. Exterior elements are not in exact position.
Interested parties should confirm details at their own discretion

