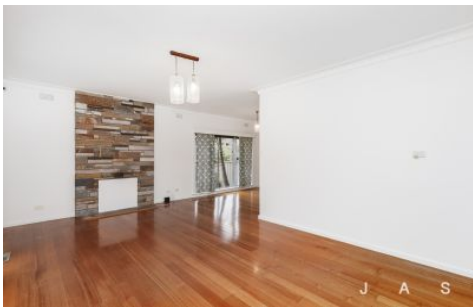


J A S



9 Gertrude Street Sunshine VIC

3  1  4 

Behind the unassuming facade and long driveway this spacious house is full of updates and features for a modern, comfortable lifestyle.

Located in the quiet residential pocket of Sunshine you will enjoy the peaceful surrounds of the tree lined streets and K Wheelahan Gardens along with easy access to Sunshine Train Station and the heart of Sunshine's eclectic shopping and dining precinct.

Beautifully presented inside the house comprises of;

- Stunning contemporary kitchen with stone bench tops, 900mm gas stove, marble tiled splash back and double drawer dishwasher
- Light filled open plan living room with polished hard wood floors
- Three great sized bedrooms with built in robes
- Lovely sun-room for a second living space

View : <https://www.jasstephens.com.au/8036593>



Robert Alacqua
0455116024

9 GERTRUDE STREET, SUNSHINE

