

J A S



1A Hughes Street Yarraville VIC

2 2 1

A stunning architecturally designed two bedroom home in a fabulous location within walking distance of the Yarraville Village.

Stroll right up Ballarat Street into the heart of the village. Multiple eateries, cafe's, eclectic shops, the railways pub and Sun Theatre are all there for your entertainment.

Easily walk to the train station or enjoy easy access to the Westgate freeway from this prime location.

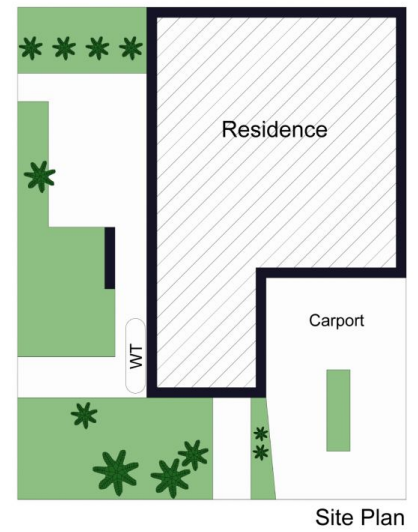
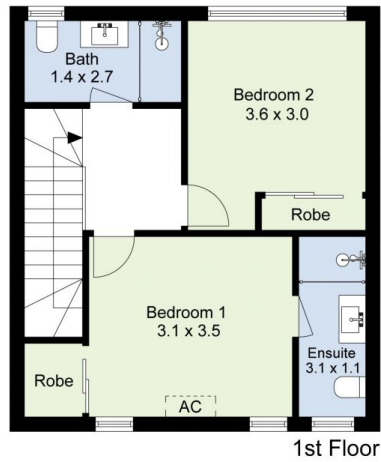
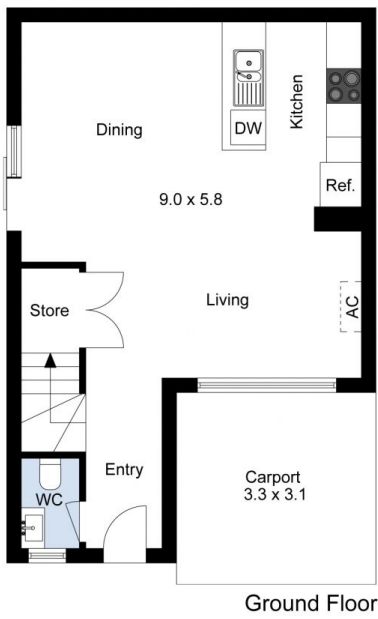
With a luxury interior the house comprises of;
Downstairs

- A sweeping open plan kitchen/dining/living area
- Light filled lounge with light coloured floorboards and split system heating and cooling
- Contemporary kitchen with stone benches, breaky bar, gas stove and a dishwasher
- A large north facing garden

View : <https://www.jasstephens.com.au/8034672>



Illy Bakesy
0435871638



Total Internal Measurement 79 Sqm.
 Measurements are indicative and in meters. Exterior elements are not in exact position.
 Interested parties should confirm details at their own discretion

Produced by **DIAKRIT**