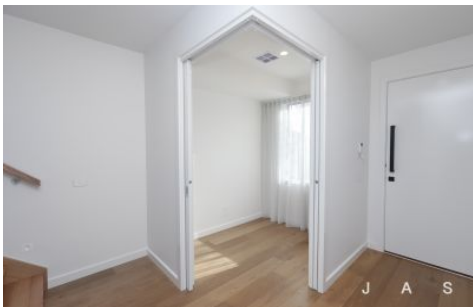


J A S



11 Neylon Street Yarraville VIC

4 3 2

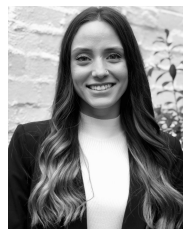
Presented to the market for the first time, this extraordinary house is designed with quality in mind. Teeming with features and the little extras that raise it to elite status, no expense has been spared when designing and building this home.

Located ideally on a quiet Street and with easy access to Cruickshank Park and Angliss Reserve you will enjoy both the sleepy tree lined suburban streets, and the easy access to Francis St, Somerville and Geelong Roads.

Yarraville Village is a hop, step and jump away with an abundance of eateries, divine shopping and of course the Sun Theatre and Railway Pub to entertain.

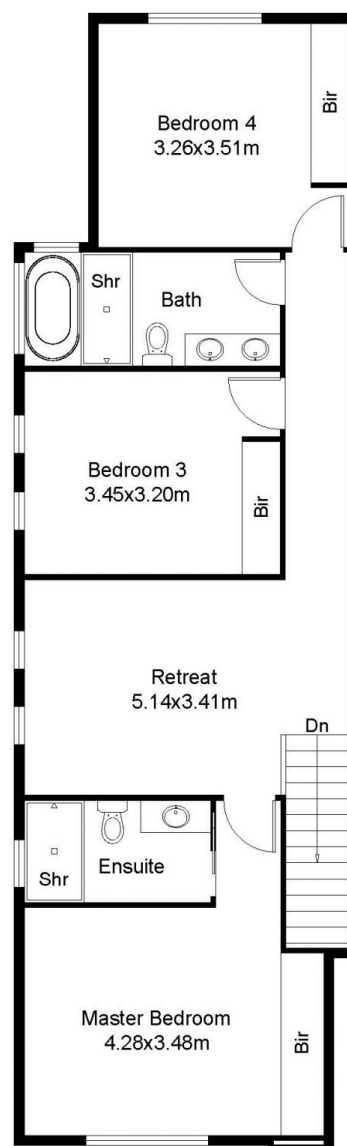
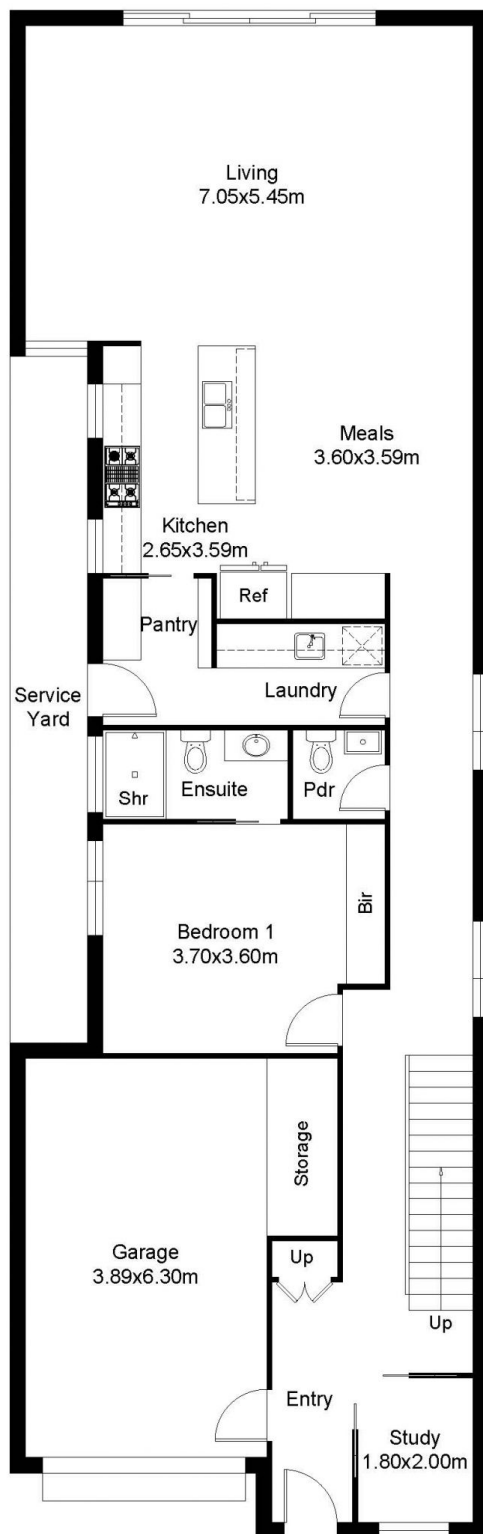
Ground Floor Comprises of;
- Master bedroom with built in robes and ensuite bathroom

View : <https://www.jasstephens.com.au/8029398>



Tennille D'Avola
0478135958

<https://www.jasstephens.com.au>



GROUND FLOOR PLAN FIRST FLOOR PLAN

This floor plan including furniture, fixture measurements and dimensions are approximate and for illustrative purposes only.
BoxBrownie.com gives no guarantee, warranty or representation as to the accuracy and layout.
All enquiries must be directed to the agent, vendor or party representing this floor plan.

11 Neylon Street Yarraville