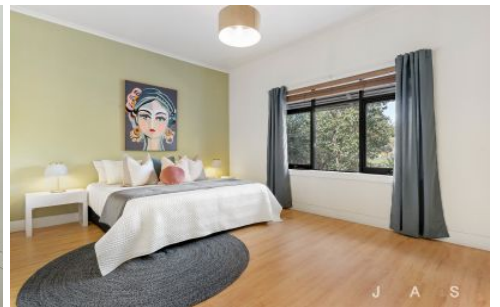


J A S



126 Essex Street West Footscray VIC

4 3 2

Families seeking space, character and style will fall head over heels for this enviably spacious Californian Bungalow, where four bedrooms are accompanied by three bathrooms, multiple living areas and private outdoor entertaining.

Superbly positioned for city-fringe family living, this coveted address places every convenience at your fingertips and the CBD approximately 9KM away.

Shorten Reserve and the Martin Reserve Dog Park are both just across the street promising instant access to wide open spaces and a much-loved playground.

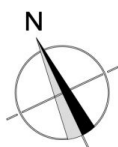
Coffee lovers will have their pick of renowned cafes to stroll to, while Barkly Village offers a great array of eateries, shops all walking distance from home.

Period style and character complemented by contemporary updates featuring;

View : <https://www.jasstephens.com.au/8008162>



Illy Bakesy
0435871638



Total Internal Measurement 194 Sqm.

This 3D floor plan is not a true representation of the property and its fixtures and fittings.
It is a representation of the space the property provides. The illustrations on the 3D floor plan cannot be changed.
Interested parties should confirm details at their own discretion

Produced by **DIAKRIT**