

JAS



8 Elphin Street Newport VIC

3  2 

This 3 bedroom home is perfectly situated and close to schools, shopping and public transportation.

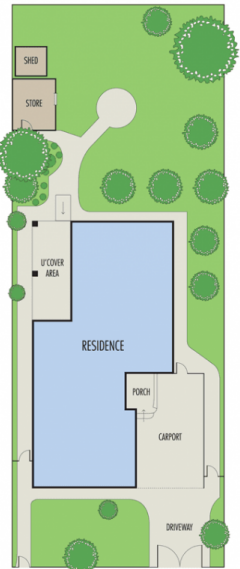
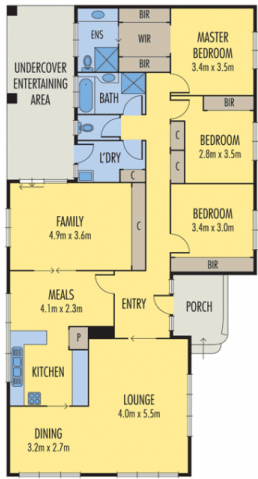
View : <https://www.jasstephens.com.au/7940506>

Features Include:

- Three bedrooms with BIR
- Floorboards throughout
- Split system heating and cooling
- Two bathrooms , one with bathtub.
- Undercover outdoor area
- Large spacious backyard
- Carport area



Natasha Roman
0478135940



Disclaimer: Please note plans are indicative only and not drawn to exact scale. All dimensions are approximate. Potential buyers should view the property in person.