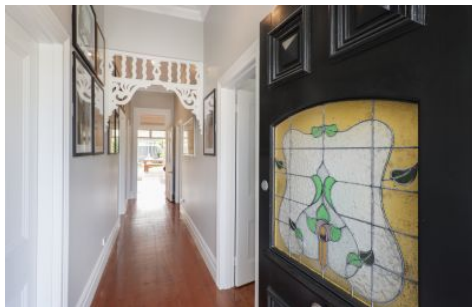


J A S



2 Ford Street Newport VIC

3 1

This picture perfect three bedroom home is just as warm and inviting on the inside as out. Lovingly cared for it is presented in immaculate condition and filled with features, creating a comfortable living lifestyle.

Located just moments to Newport Junction you will enjoy easy access to local shops, restaurants and cafe's, Newport train Station and bus depot and green spaces with Bryan Martyn Reserve a block away.

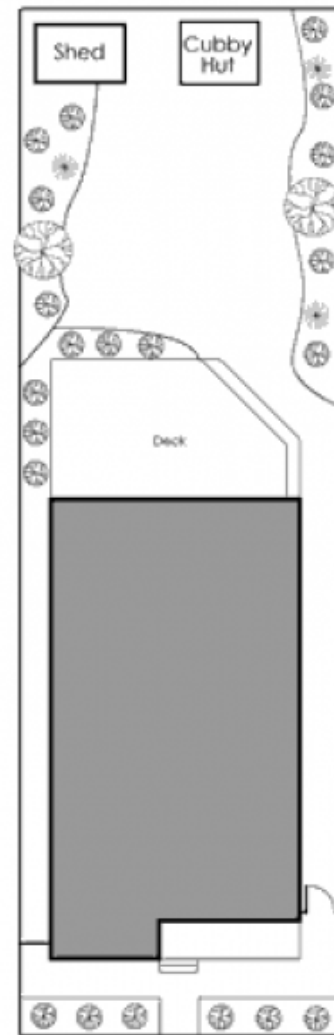
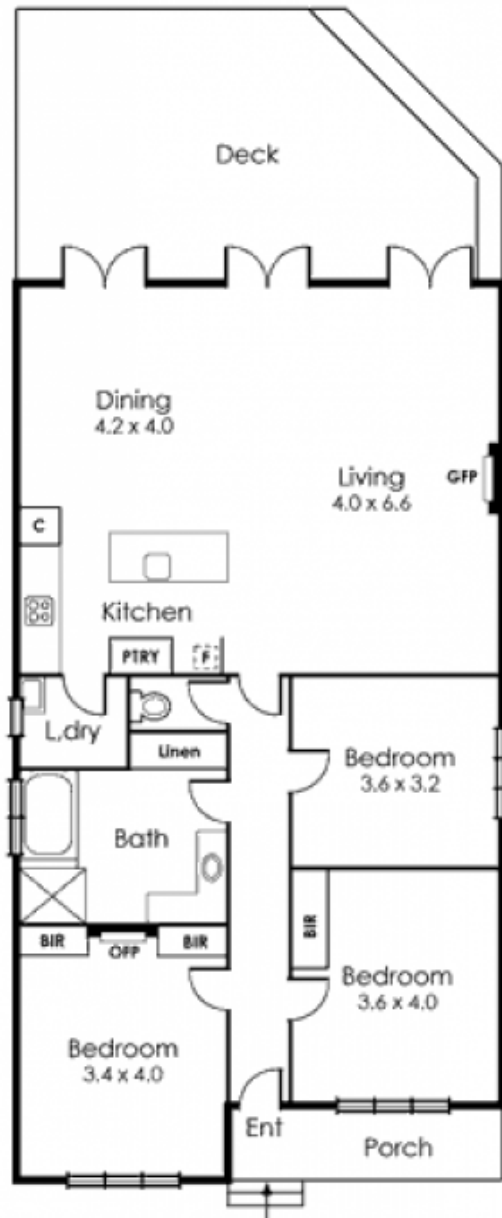
The house comprises of:

- Three generous bedroom with built in robes
- Open plan living opening via 3 sets of French doors to the alfresco dining area
- Stunning kitchen includes a giant stone island bench with breakfast bar, 900mm Smeg gas stove and dishwasher
- Ducted evaporative cooling, gas log log fireplance and

View : <https://www.jasstephens.com.au/7846662>



Thomas Molea
0455 116 024



Site Plan

