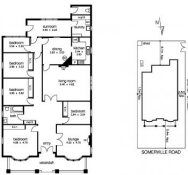


J A S



295 SOMERVILLE ROAD, YARRAVILLE



295 Somerville Road Yarraville VIC

6 1 3

This large elegant home on a corner location comprising of 5 or 6 bedrooms and study, depending on your configuration. Separate oversized formal lounge & living areas, along with a stunning entrance hall greets you as soon as you step through the front door.

Updated living, whilst still retaining it's period features all areas of the home provide generous living spaces allowing room for the largest of families with a stylish bathroom, gas heating and large kitchen with adjoining separate dining area.

Step through a sun drenched rear sunroom, perfectly suited as another area of retreat, before stepping out into the large private rear yard.

A fully secure low maintenance back yard also allows for two cars to be parked securely off the street with storage shed and only a moments stroll to Cruickshank park, local schools and Yarraville Village.

View : <https://www.jasstephens.com.au/7320830>



Chris Worthy
0456809247

<https://www.jasstephens.com.au>

295 SOMERVILLE ROAD, YARRAVILLE

