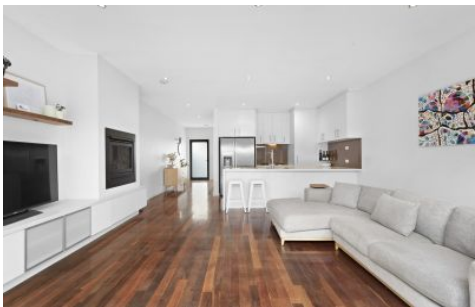


# J A S



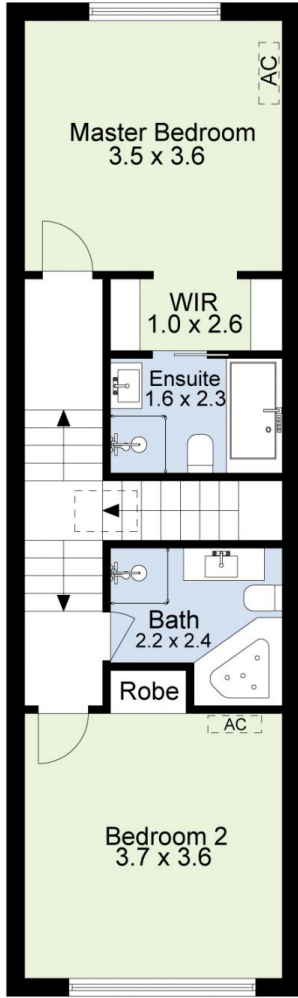
**1/364 Williamstown Road Yarraville VIC**

**2  2  2 **

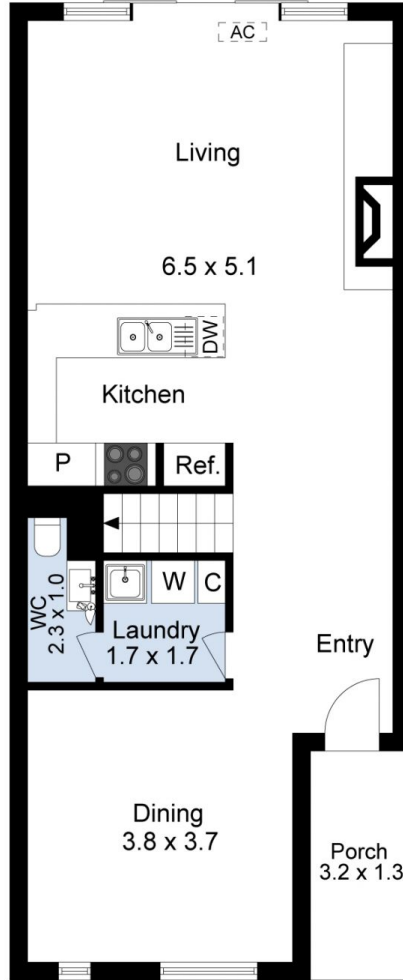
This stunning double-storey townhouse offers:

- Two bedrooms include a spacious master with a walk-through robe and large ensuite
- Formal dining room with double-glazed windows + open-plan kitchen/living with well-appointed modern kitchen and feature fireplace
- Split-system heating and cooling in both bedrooms and living area
- Large paved entertaining patio + secure off-street parking for two cars via rear ROW
- Conveniently positioned just 9.5km\* from the CBD in a sought-after pocket of Yarraville, within strolling distance of cafes, parks, playgrounds and Yarraville Village
- Sought-after school zone - Wembley Primary School (12-minute\* walk) and Footscray High School's Pilgrim campus.

**View :** <https://www.jasstephens.com.au/7315562>



1st Floor



Ground Floor



Site Plan

### Total Internal Measurement 129 Sqm.

Measurements are indicative and in meters. Exterior elements are not in exact position.  
Interested parties should confirm details at their own discretion

