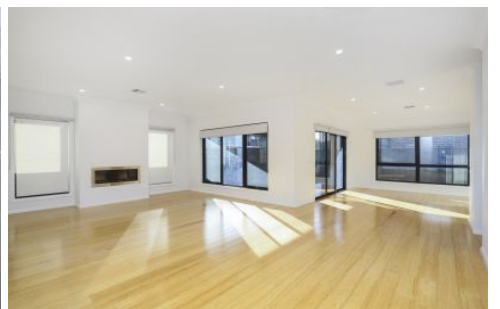
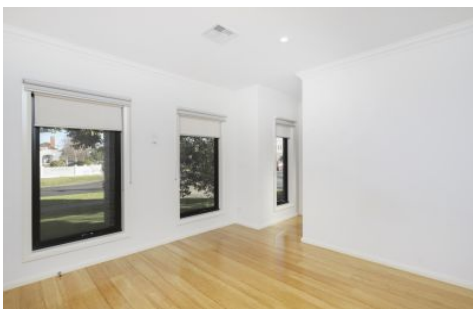


J A S



6 Benbow Street Yarraville VIC

4 🏠 3 🚗 2 🚗

Proximity to Wembley Primary School, Parks and Sporting facilities enhances this enticing family home!

View : <https://www.jasstephens.com.au/7156916>

Features include:

- Downstairs Master bedroom with built in robes & en-suite
- Large open plan living & dining area
- Kitchen with dishwasher & walk in pantry
- Laundry with under stairs storage
- Upstairs you'll find another Master bedroom with en-suite
- A further two (2) remaining bedrooms with robes
- Rumpus room for the whole family to enjoy
- Central upstairs bathroom
- x2 Powder rooms
- Double garage with remote
- Alfresco area with a low maintenance yard



Illy Bakesy
0435871638