

# JAS



**G01/21 Victoria Street Footscray VIC**

**2** 

## THE OPTIONS ARE ENDLESS - BLANK CANVAS

This premises is ideal for many businesses. This light filled property is suitable for office environment, studio, food or retail space? the options are huge!

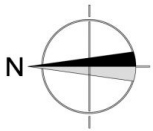
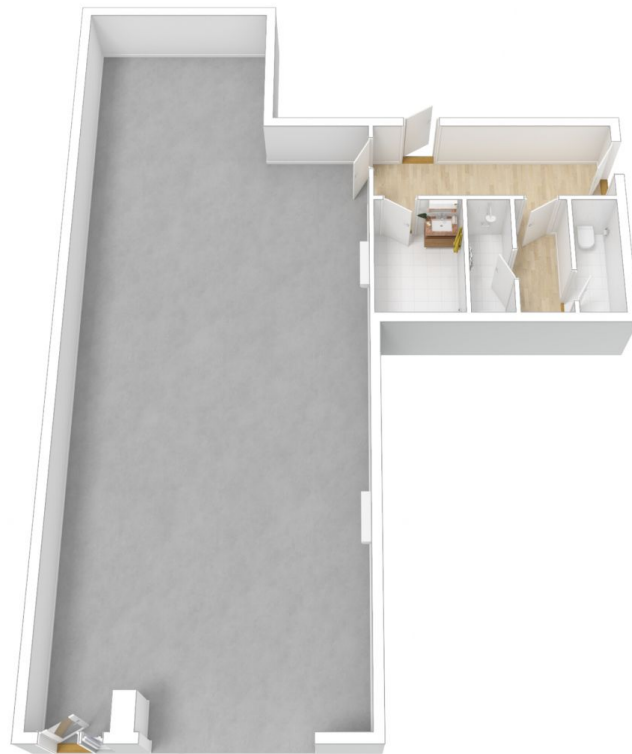
- Open plan
- Brand new
- 2x undercover secure carparks
- Rear access from Bexley St Street
- 2x Split System Air-con
- Access to a shower room and 2 toilets (one is a disabled toilet). Sharing only with the shop next door.
- Grease trap
- Gas
- Great street parking
- Public transport at doorstep

**Building Size** : 93 sqm

**View** : <https://www.jasstephens.com.au/7081638>



**Daria Beck**  
**0449867537**



**Total Internal Measurement 117 Sqm.**

Measurements are indicative and in meters. Exterior elements are not in exact position.  
Interested parties should confirm details at their own discretion

Produced by **DIAKRIT**