

J A S



87 Graham Street Newport VIC

2 1 1

Enjoy this distinctive and stylish light filled townhouse desirably situated just moments from Newport Lakes Park, within easy reach of The Circle's quality shopping and the Vernon Street village.

Features comprising of the following:-

- Two double bedrooms both with built-in robes
- Contemporary central bathroom
- Modern kitchen featuring stainless steel appliances, stone benches & dishwasher
- Light filled living domain
- Split system heating/cooling
- Single car accommodation
- Bamboo flooring
- Lovely private courtyard

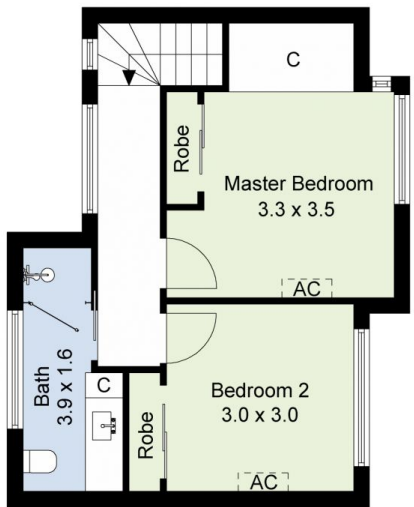
View : <https://www.jasstephens.com.au/6824630>



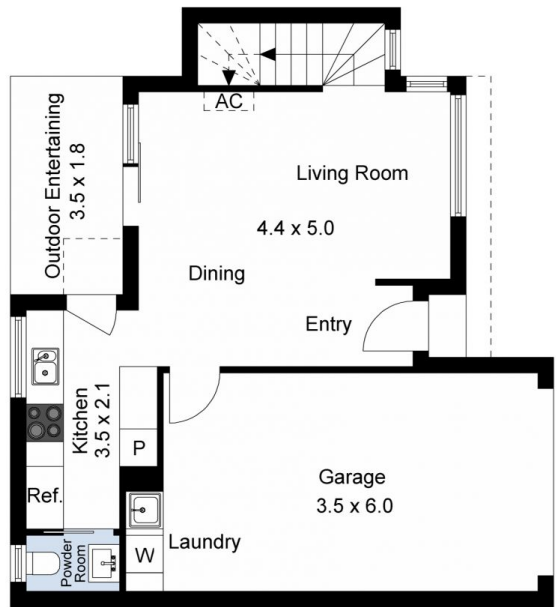
Illy Bakesy
0435871638

WE KINDLY RECOMMEND REGISTERING FOR INSPECTIONS AND/OR CHECKING TIMES ON THE

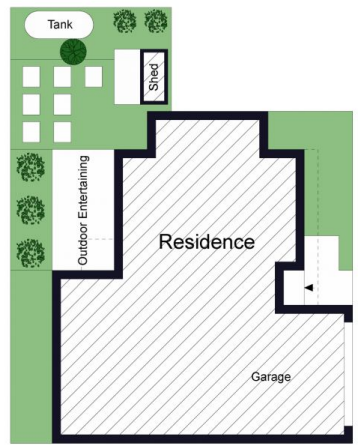
<https://www.jasstephens.com.au>



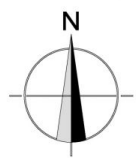
First Floor



Ground Floor



Site Plan



Total Internal Measurement 107 Sqm.
 Measurements are indicative and in meters. Exterior elements are not in exact position.
 Interested parties should confirm details at their own discretion

Produced by **DIAKRIT**