

JAS



378 Somerville Road West Footscray VIC

3 2 2

When great spaces are matched by superb garden dimensions the appeal of a property forms a beautiful indoor-outdoor balance - as demonstrated by this highly desirable home moments from bus routes, Bassett Reserve, Cruickshank Park and Kingsville Primary School.

- Renovated kitchen/meals area
- Stainless steel appliances
- Living and dining areas filled with northern light
- Fabulous covered decked and the lush established garden beyond.
- Three bedrooms , including a main bedroom with a stylish ensuite
- Two fresh bathrooms
- Carport and storage shed
- Additional off street parking spot

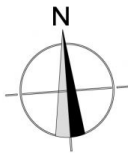
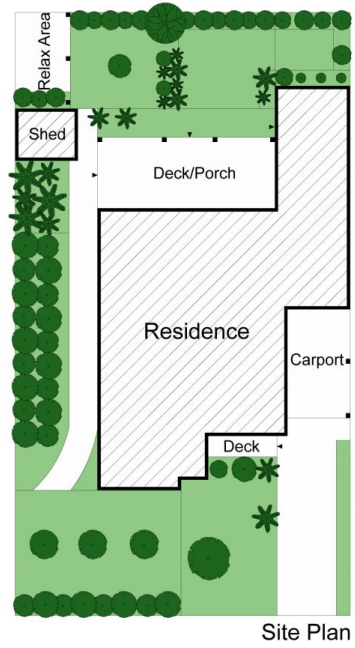
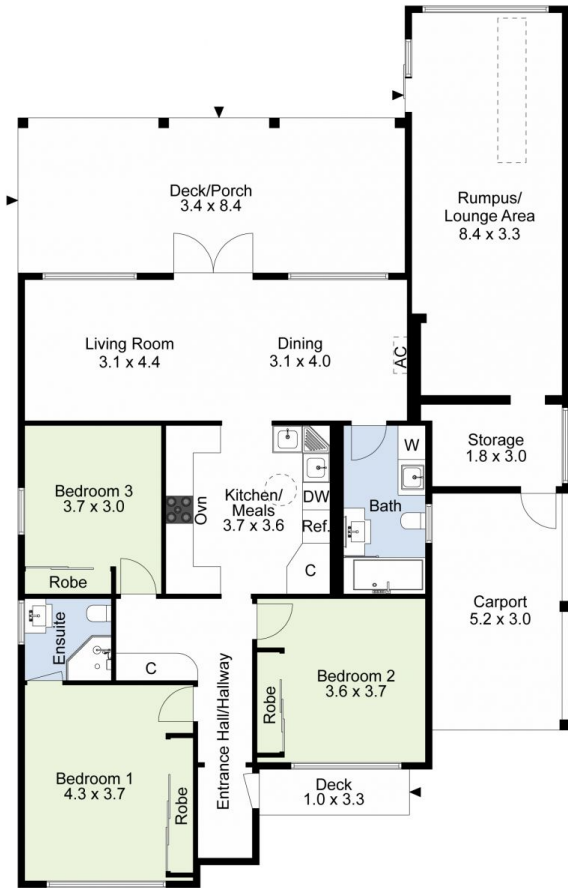
View : <https://www.jasstephens.com.au/6756697>



Sarah McCracken
0478135947

WE KINDLY RECOMMEND REGISTERING FOR

<https://www.jasstephens.com.au>



Total Internal Measurement 143 Sqm.

Measurements are indicative and in meters. Exterior elements are not in exact position.
Interested parties should confirm details at their own discretion

Produced by **DIAKRIT**