

J A S



10 Chirnside Street Kingsville VIC

4 🏠 2 🛏

Enjoy this elegant Edwardian family home that has been fully renovated to respond to contemporary family needs with evident style and success located in a tree lined street within close proximity to Yarraville & Seddon Village, West Footscray station, Kingsville Primary School & Cruickshank Park.

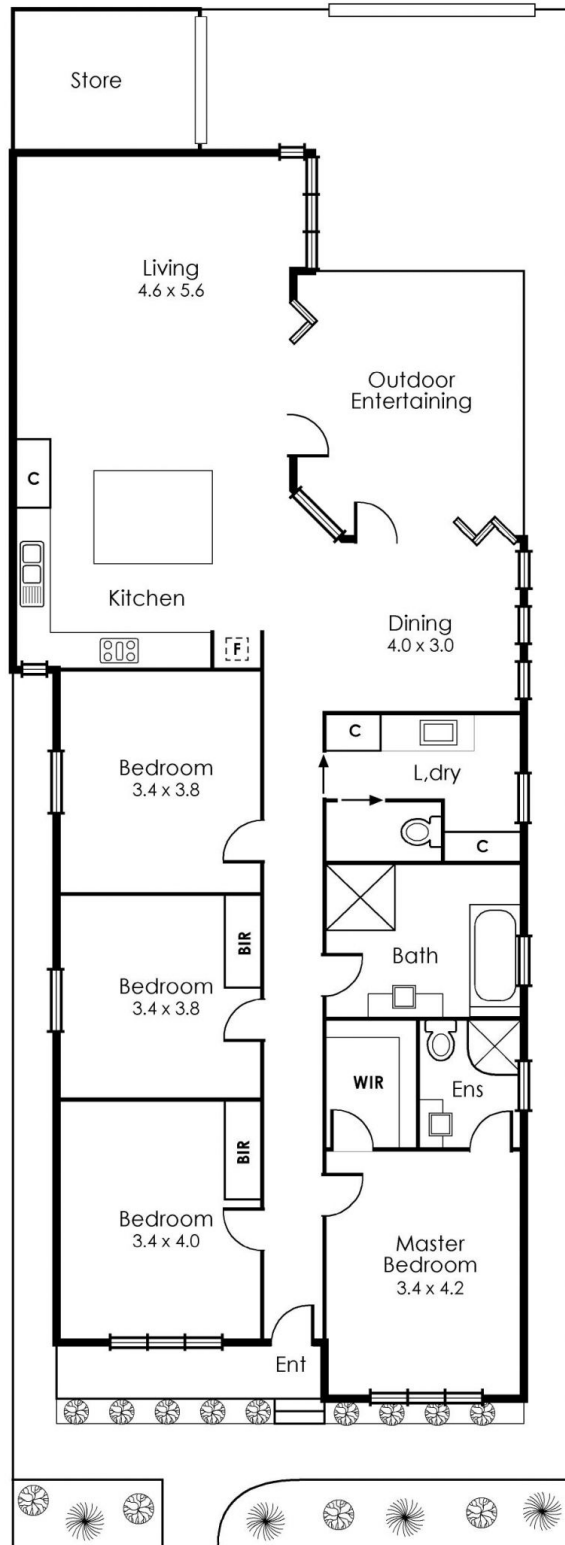
Features comprising of the following:-

- Four generous bedrooms, master with walk in robe and ensuite, (or 3 bedrooms plus large study/ home office)
- Fabulous contemporary central bathroom
- Perfect introduction to bright, light filled living and dining areas arranged around an open plan kitchen featuring stone benches, lve oven and integrated Siemens dishwasher.
- Family laundry with loads of storage
- Ducted gas central heating and evaporative cooling
- Sunny courtyard with deck, raised garden beds and

View : <https://www.jasstephens.com.au/6754927>



Alex Boyce
03 9316 9069



This floorplan is a guide only and no warranty is given to it's accuracy in dimensions. Purchasers are advised to carry out their own investigations.