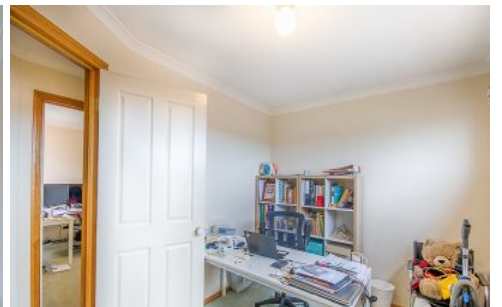


# J A S



## 25A Bena Street Yarraville VIC

3 1 2

Set within proximity to the Vibrant Yarraville Village, this spacious two-level home provides both comfort and convenience. Offering three well proportioned bedrooms with robes, a central bathroom with bathtub, laundry, cosy lounge and large kitchen with dining room. Outdoors offers a sun filled backyard and off-street parking via secure garage and driveway. Heating and cooling on both levels of the home and plenty of storage add to appeal. Located close by to local shops, cafes, reserves, public transport and freeway access.

WE KINDLY RECOMMEND REGISTERING FOR INSPECTIONS AND/OR CHECKING TIMES ON THE INTERNET 24 HOURS PRIOR TO BE KEPT UPDATED OF CANCELLATIONS.

View : <https://www.jasstephens.com.au/6564302>



**Shelby Nunn**  
0478 135 951