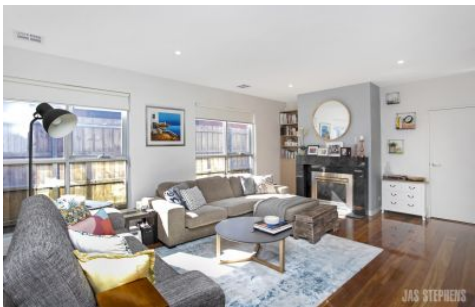


JAS



4/19 Carmen Street Newport VIC

3 2 1

Located in arguably the best residential pockets in Newport, enjoy vast open spaces in every direction with Newport Lakes reserve to the North, Altona Lakes Golf course to the West and directly opposite Carmen Street Playground and rugby oval. For the commuter, take full advantage of the easy access to public transport down Mason Street and just a few short minutes from Newport Train Station.

Tucked away at the rear of the complex this stunning double storey townhouse is sure to tick all of the boxes.

Downstairs comprising a large bedroom with built in robes, full size modern kitchen with ample bench and storage space, integrated dishwasher, stainless steel Miele appliances and stone benchtops, separate modern bathroom and laundry and spacious open plan living and

View : <https://www.jasstephens.com.au/6460830>



Michaela Geary
0478135963