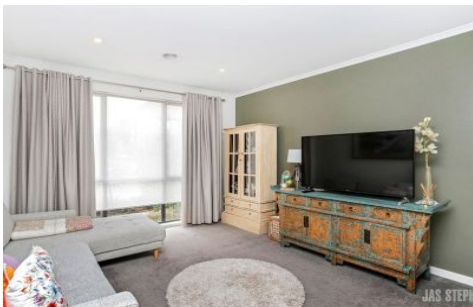


JAS



18 Beech Street Footscray VIC

3 2 2

This exquisite home lays within the popular Banbury Village estate, close by to public transport, cafes, restaurants, bars, shops and parks - the location could not be more ideal! The ground floor offers a formal living room, open plan living and dining zone, spacious kitchen with island bench and stainless-steel appliances, laundry and powder room. Upstairs a master bedroom includes substantial built in robe space and ensuite whilst two further bedrooms also include built in robes and are serviced by the large central bathroom. Outdoors an appealing yet low maintenance courtyard offers a generous entertaining area. Secure garage and additional car space via drive provide two off street car spaces. Heating and cooling. This property is sure to tick all of your boxes and wont last long!

View : <https://www.jasstephens.com.au/6426508>



Stephanie Knight
03 9316 9033

WE KINDLY RECOMMEND REGISTERING FOR INSPECTIONS AND/OR CHECKING TIMES ON THE

<https://www.jasstephens.com.au>