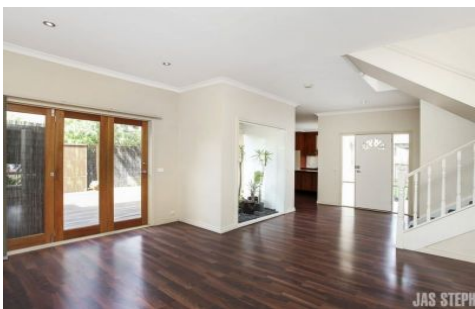


JAS



1A Beverley Street YARRAVILLE VIC

2 1 1

This comfortable and spacious townhouse presents the ideal low-maintenance lifestyle whilst sitting within proximity to Stony Creek, Yarraville Village, public transport and easy freeway access. Generous living and dining areas and an accompanying kitchen with dishwasher are complemented by an appealing north-easterly decked courtyard featuring bi-fold doors. Upstairs two double bedrooms share a semi ensuite central bathroom. Powder room, ducted heating and off street parking are additional bonuses!

WE KINDLY RECOMMEND REGISTERING FOR INSPECTIONS AND/OR CHECKING TIMES ON THE INTERNET 24 HOURS PRIOR TO BE KEPT UPDATED OF CANCELLATIONS.

PLEASE NOTE: THE PROPERTY MUST BE VIEWED PRIOR TO SUBMITTING AN APPLICATION.

View : <https://www.jasstephens.com.au/6364072>



Tyla Collier
0435871651