

J A S



12 Taylor Street Yarraville VIC



This is your opportunity to secure a modern office premises in an unbeatable prime location of Yarraville with or without existing fit out. Minutes to the Westgate Bridge, Docklands Blvd or Yarraville Village and all that it has to offer. Perfectly suited for all office type applications or be totally creative and utilise the space for health & fitness, studio suite or support services.

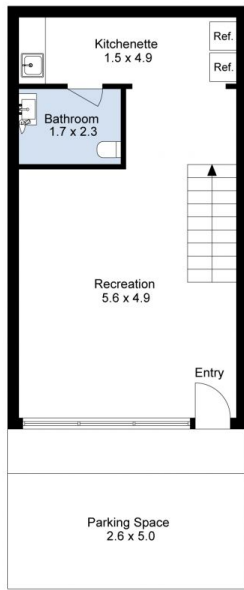
Property Features Include:

- Two level open plan office space with separate boardroom
- Ground floor/reception area of 44sqm (approx.)
- First floor area of 86sqm (approx.)
- Board room glass encased
- Data cabling, workspace desk partitions, boardroom equipment & cabinetry included
- Central ducted air conditioning/heating

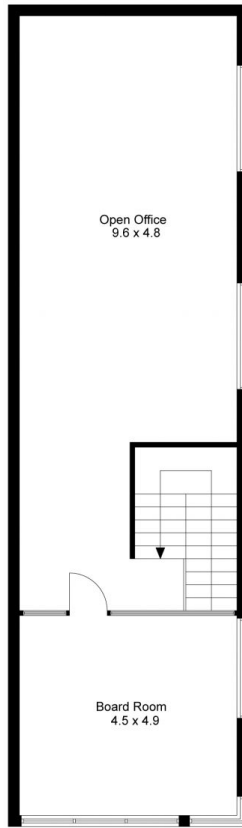
Building Size : 130 sqm
View : <https://www.jasstephens.com.au/6316736>



Chris Worthy
0456809247



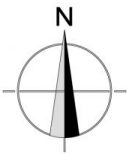
Ground Floor



1st Floor



Site Plan



Total Internal Measurement 126 Sqm.

Measurements are indicative and in meters. Exterior elements are not in exact position.
Interested parties should confirm details at their own discretion

Produced by **DIAKRIT**