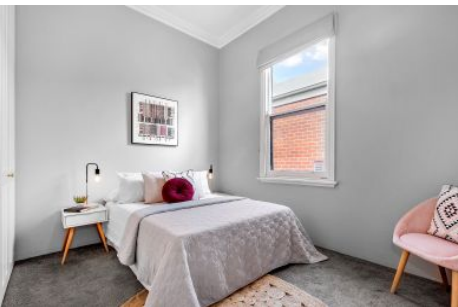


# J A S



## 15 Adelaide Street FOOTSCRAY VIC

3  1 

A cool contemporary edge enhances the enduring classical appeal of this bright three bedroom double-fronted Victorian.

The unique stylish glass wall at the rear of the house creates a seamless link between the large open plan living/dining area and beautifully landscaped garden/paved outdoor entertaining area letting in plenty of natural light.

Other features includes built in robes, modern kitchen with stainless steel gas appliances and dishwasher, sky-lit bathroom, heating and cooling via split system.

WE KINDLY RECOMMEND REGISTERING FOR INSPECTIONS AND/OR CHECKING TIMES ON THE INTERNET 24 HOURS PRIOR TO BE KEPT UPDATED OF CANCELLATIONS.

**View :** <https://www.jasstephens.com.au/6258826>



**Michaela Geary**  
0478135963