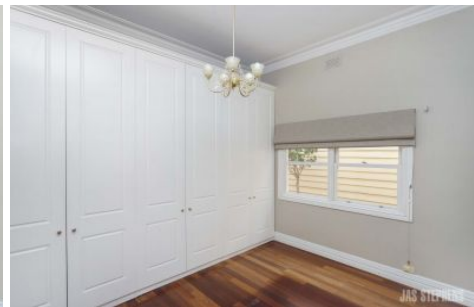


J A S



9 Princess St Yarraville VIC

2 1

Super appealing two bedroom home is in an awesome location - midway between Yarraville village, Seddon train station and the gorgeous Yarraville gardens. Features two generous bedrooms (master with built in robes), central period style bathroom has shower over bath and laundry facilities, open plan kitchen offers dishwasher and gas stove and heaps of storage space. Open plan living area features gas heating, split system and overlooks lovely landscaped gardens. Don't miss inspecting this one!
WE KINDLY RECOMMEND REGISTERING FOR INSPECTIONS AND/OR CHECKING TIMES ON THE INTERNET 24 HOURS PRIOR TO BE KEPT UPDATED OF CANCELLATIONS.

View : <https://www.jasstephens.com.au/6248552>



Sally Monro
0435871615