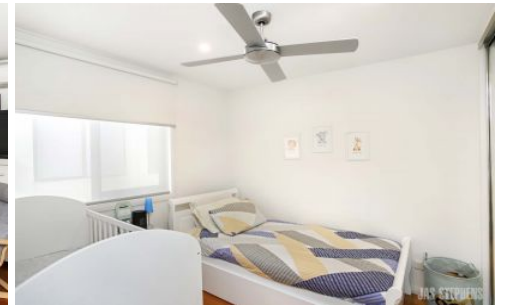


# JAS



## 9/2A Simpson Street Yarraville VIC

2 1 2

Located in Yarraville Village this light filled 2 storey townhouse combines the best of contemporary design only a short 100 meter stroll to the Yarraville village, shops, cafes and train stations.

**View :** <https://www.jasstephens.com.au/5606422>

Upon entry you will find a large open plan living/kitchen area with stainless steel appliances including dishwasher, upstairs there are 2 bedrooms both with built in robes, a shared bathroom and a good sized landing perfect for an office space.

Additional features include split system to master bedroom & living area, ceiling fans in lounge room & both bedrooms, 3 separate outdoor areas for all your entertaining purposes and 2 secure car spaces.