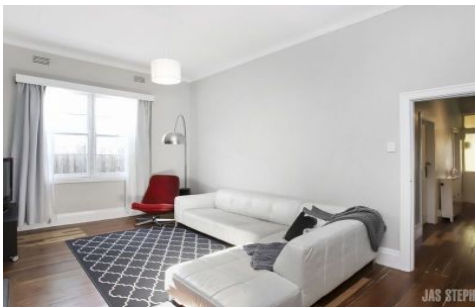


# JAS



## 20 Warleigh Road Footscray VIC

3 2

This gorgeous character home is all you have been looking for and more, offering two generously sized bedrooms under the main roof and one fully insulated bungalow with it's own private ensuite. The sun-soaked living and dining area are the perfect places to relax and soak up this truly stunning home and further complimented by striking hardwood floors throughout and ornate fireplaces. Additional features include dishwasher, gas cooking and a large secure grassed rear yard for the kids or pets. Situated just minutes walk from the nearest train station and with the IGA Supermarket at the end of the street there is no better location. School catchments include Footscray City College and Footscray West Primary School.

**View :** <https://www.jasstephens.com.au/5360276>



**Hannah Waerea**  
03 9316 9062

WE KINDLY RECOMMEND REGISTERING FOR INSPECTIONS AND/OR CHECKING TIMES ON THE INTERNET 24 HOURS PRIOR TO BE KEPT UPDATED