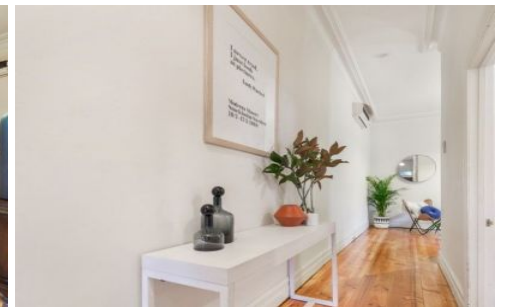


J A S



10 Thomson Street SEDDON VIC

2 1

This Edwardian home offers bright airy living spaces under high ceilings with exquisite period detail. A delightful frontage leads through to a well flowing floor plan offering two generous sized bedrooms with built in robes, central bathroom with bathtub, cosy living room and sun filled kitchen with meals area. Elegant leadlight French doors open out onto the north facing, paved rear garden perfect for entertaining or basking in the sun. Additionally, separate laundry, garden shed, central heating and split system aircon ensure comfort and convenience is key. Enjoy living in a highly sought-after pocket of Seddon only moments from well-loved cafes, restaurants, boutique shops, parks and public transport. You will not be disappointed!

WE KINDLY RECOMMEND REGISTERING FOR INSPECTIONS AND/OR CHECKING TIMES ON THE INTERNET 24 HOURS PRIOR TO BE KEPT UPDATED OF CANCELLATIONS.

View : <https://www.jasstephens.com.au/5290908>