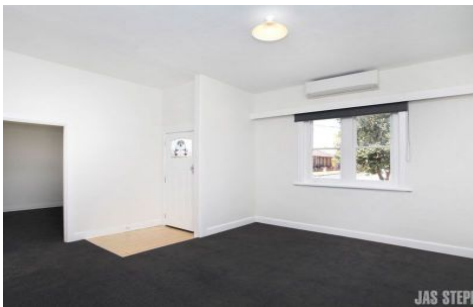


# JAS



## 56 Severn Street YARRAVILLE VIC

4 1 2

This charming double fronted Edwardian home is in an awesome location close to Cruickshank Park, and easy walking distance from Yarraville village and even closer to Yarraville Square shopping centre.

With four generous bedrooms, it's been freshly painted, and has brand new carpet and newly polished floorboards. Kitchen offers gas appliances, dishwasher, ample cupboard space and plenty of room for a dining table.

Also offers sparkling bathroom with shower only, split system heating/cooling in the spacious loungeroom, great backyard with scope for a greenthumb and off street parking.

WE KINDLY RECOMMEND REGISTERING FOR INSPECTIONS AND/OR CHECKING TIMES ON THE INTERNET 24 HOURS PRIOR TO BE KEPT UPDATED OF CANCELLATIONS.

PLEASE NOTE: THE PROPERTY MUST BE VIEWED

**View :** <https://www.jasstephens.com.au/5238401>