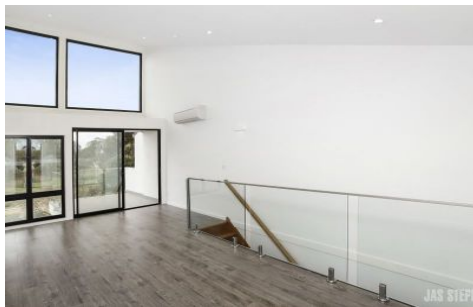


JAS



7/20 Gordon Parade YARRAVILLE VIC

2  2  1 

This brand-new town residence sits close by to the heart of Yarraville Village with easy access to the west gate bridge and CBD. Set in a brand-new development overlooking park land, a flowing floorplan and polished presentation defines contemporary living. Featuring two spacious bedrooms with built in robes, two gleaming bathrooms, open plan living and dining zone and well-equipped kitchen with stainless steel appliances, soft closing draws, stone bench tops and ample cupboard space. Additionally, a powder room, laundry, split system heating and cooling, car space and balcony / courtyard with brilliant views ensure comfort and convenience is key. You will love soaking up the Yarraville lifestyle in this leafy but vibrant spot! Please note: additional photos and open for inspections expected mid-October.

WE KINDLY RECOMMEND REGISTERING FOR INSPECTIONS AND/OR CHECKING TIMES ON THE

View : <https://www.jasstephens.com.au/5207324>

<https://www.jasstephens.com.au>